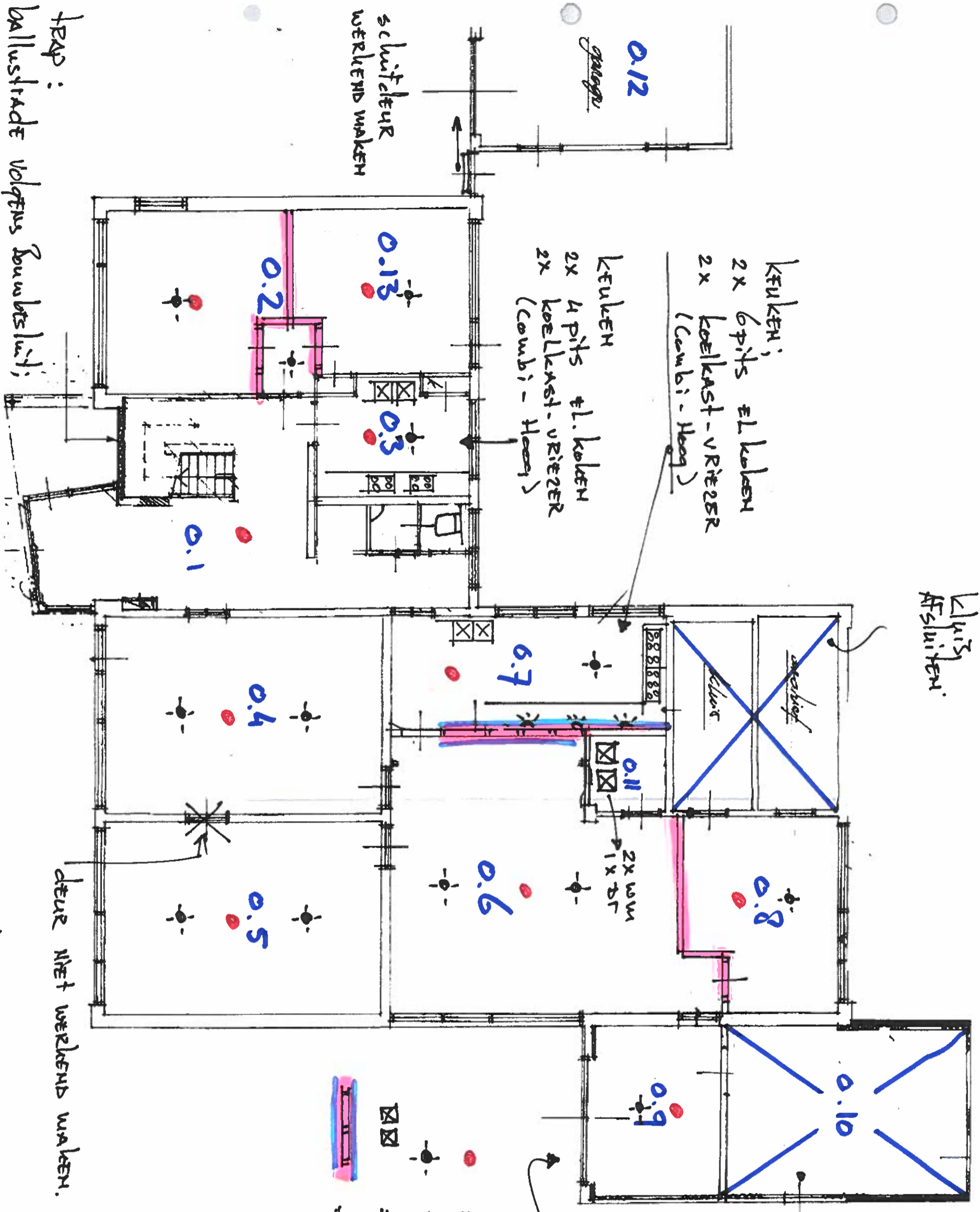


Luif  
Afsluiting







trap:  
ballustrade volgens Bouwbesluit;  
- Hoogte min 0,9 m'  
- openingen tot 0,6 m'  
≤ 0,2 m'


Begane grond

Nieuw.

deur niet werkend maken.

 = Raakwelders met 2555  
 = Verlichting (plafonier)  
 = Combi koelkast. vriezer  
 (Pui voorzien van ruwplaat  
 (botte zijden).

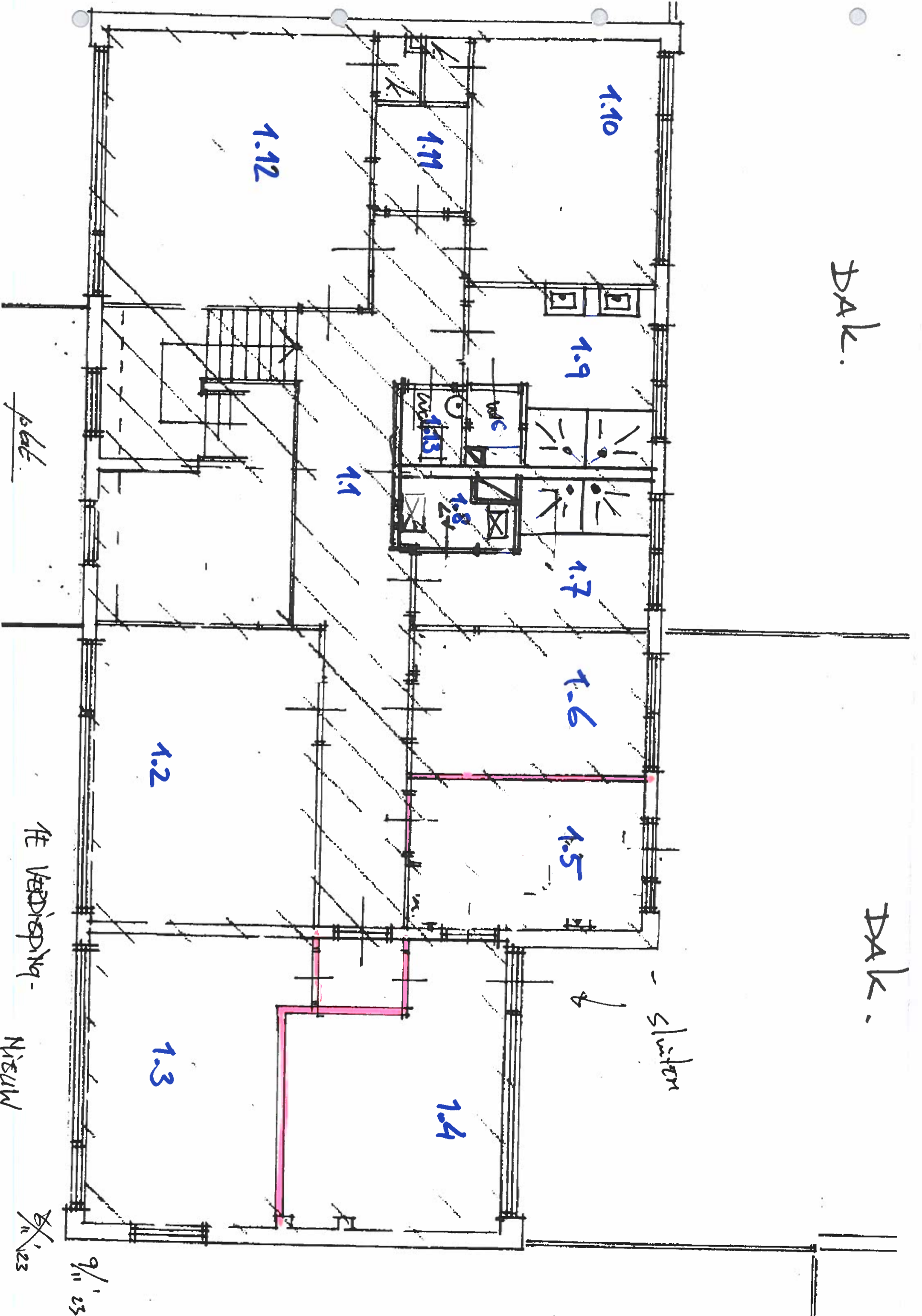
 garage deur slopen & afvoeren. met keegem plaatsten. met raakw + ventilatie rooster.

 Afsluiting

~~11' 23~~ 9' 23  
 1:100

Dak.

Dak.



plat.

In de verdieping -

Niveau

$\frac{1}{11} \cdot 23$

$\frac{1}{11} \cdot 23$